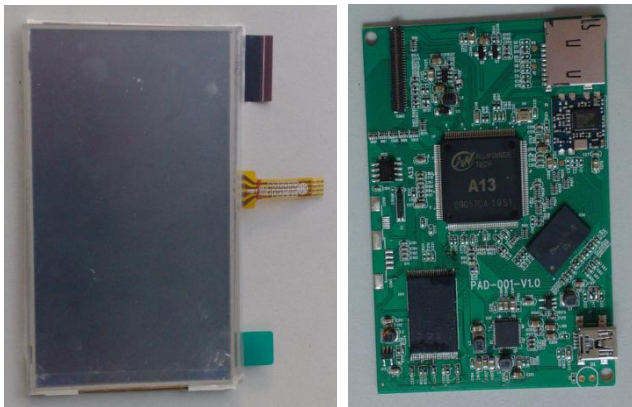


4.3" Mini Tablet PCB

SRK-MT001

4.3 inches Android Mini Tablet



Highlights

- ✓ Support pictures and Video
- ✓ Support WiFi Ethernet connection
- ✓ 4.3" High Brightness IPS Panel
- ✓ Resistive Touch Screen
- ✓ With built-in SD card for local storage
- ✓ Allows to install any Android APP
- ✓ USB and WiFi
- ✓ Support different language character sets

Suitable for

- ✓ In-store promotion
- ✓ Interior décor integration
- ✓ Interactive video display
- ✓ Museum and library information

The 4.3" Mini Tablet

What is the 4.3" Mini Tablet?

The Sirkom Mini Tablet 4.3" is our solution for digital price tagging. Small touch screens can be accessed locally or through a wireless network with product information such as prices, specifications and demo video's. The product was created for special digital signage business and it is perfect to display the specifications for some consumer electronics.

It is a simple and low cost digital signage terminal showing the promotion pictures and videos when the terminal is idle, and with capability for interaction using the built-in resistive Touch Screen. Just put this tablet beside this promoting consumer electronics and the customers can see the specifications of this product from this screen. Also you can put some advertisement for this product and play it all the time.

Where are the information stored?

The Mini Tablet 4.3" has a WiFi network interface (802.11b/g/n 150M) and gets the information from a local server or through the internet/VPN from a headquarter and store it in the internal memory or in the expansion MicroSD slot.

Possible applications

The Mini Tablet 4.3" can be used to display additional information about a product. This can be information about the manufacturing process of a good, about the region where the product came from, which other products fit best to the good or any other advantages.

Main Features

Features:

Support pictures and Video
Support WiFi Ethernet connection
4.3" High Brightness IPS Panel
Resistive Touch Screen
With built-in SD card for local storage
Allows to install any Android APP
USB and WiFi
Support different language character sets

The Sirkom Android Based Mini Tablet has been designed to broadcast your content on any number of locations. Customers can find standard content and/or use the touch screen for interactive information searching. Data in all possible formats is monitored and uploaded from any location using one central interface.

Operation

Operation:

- User scans can interact with the touch screen on the item to be enquired, using any Android APP.
- The actions of the APP can be sent to the host / server via WiFi network.
- Host / Server application will use the information to search for the pricing, stocking number, promotion information or product specification of the item.
- The corresponding information (in text / picture / video format) will be sent to our Mini Tablet.
- Our Mini Tablet will then show out the text or picture onto the screen.
- When the Mini Tablet is idle, it can display some promotion pictures in slide show. The promotion pictures can be sent from the host / server via WiFi Network and then store on the internal memory or local SD card of the Mini Tablet.

CPU	CPU Cortex A8 1.2GHz (Single Core)
OS	Android 4.1 OS
GPU	Mali400 MP, Support OpenGL ES2.0 and Open VG1.1
DDR	512MB DDR3 (512MB X 1)
NAND flash	4GB
Resolution	800x480 Pixels
USB input	Mini USB for OTG and Power
Card input	Built-in TF card reader
OS Language	Chinese, English, German, Spanish, Italian, French, Portuguese and Dutch
Video out	HDMI 1.3 & 1.4 (1080p)
Audio format Video	Mp3/WMA/APE/FLAC/AAC/OGG/WAV
format Pictures format	3GP/AVI/MPG/FLV/MP4/WMV/MKV/MOV/RMVB/VOB/TS/ISO/M2TS JPEG/BMP/GIF/PNG
WiFi	WiFi 802.11n module
Internet Service	Web browser, Google Play
Remote control	4.3 inches IPS high brightness Touch screen
Power rate	AC: 100-240V 50/60Hz DC: 5V 1A Mini USB interface

Digital Signage Hamburg, GmbH

Albert-Gebel-Str. 14, 21035 Hamburg, Germany – T. +49 (0)40 73928854

info@sirkom.com